



Florida Department of
TRANSPORTATION

Safety Office and Florida Law Enforcement Liaison (LEL) Program

Safety Office - About Us

- Our mission is to continually improve the safety of the traveling public.
 - We gather, analyze, and report data on traffic crashes, injuries, and fatalities in Florida.
 - We work with communities to identify and help resolve traffic safety issues.
 - We distribute federal traffic safety funds to do engineering and behavioral improvements.
 - We oversee industrial safety within the agency.

Safety Office Divisions

- Industrial Safety
- Safety Engineering
- **Traffic Safety Grants**



Traffic Safety Grants

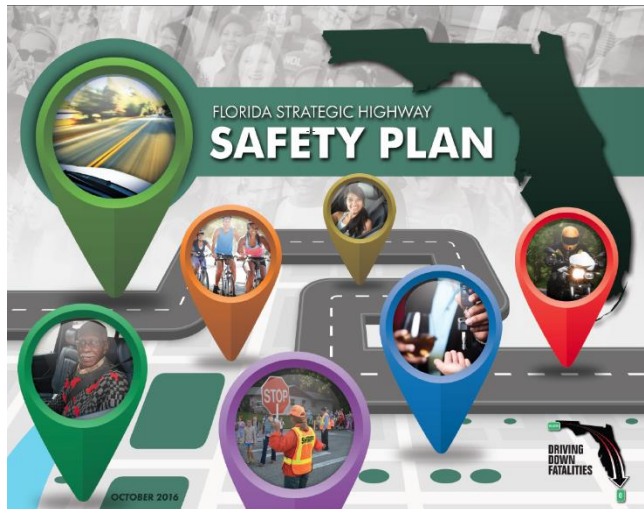
- Administers and maintains the National Highway Traffic Safety Administration Highway Safety Grant Program through implementation of the Highway Safety Plan under the umbrella of the Florida Strategic Highway Safety Plan.

**FDOT receives
approximately 23 Million
per year for behavior
improvements**



Florida's Strategic Highway Safety Plan

Florida shares the national traffic safety vision, "Toward Zero Deaths," and formally adopted our own version of the national vision, "Driving Down Fatalities."



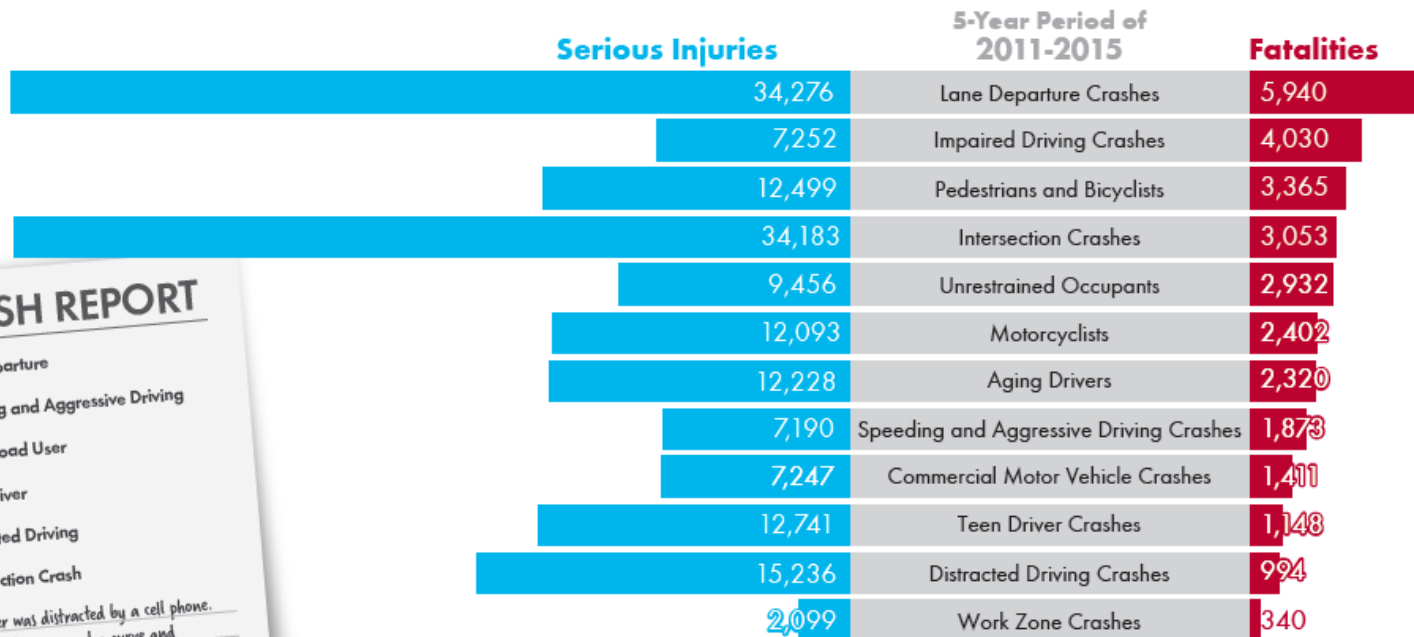


Florida's Strategic Highway Safety Plan

CRASH REPORT

☒ Lane Departure
☒ Speeding and Aggressive Driving
☐ Aging Road User
☒ Teen Driver
☒ Distracted Driving
☐ Intersection Crash

Teen driver was distracted by a cell phone.
He was speeding around a curve and
departed the roadway colliding with a tree.



Note: Multiple factors are involved in almost every crash.

Source: Department of Highway Safety and Motor Vehicles (2016).

NHTSA Funding Condition

- Requires State Participation in 3 NHTSA National Waves
 - May 12 – June 2, 2019 *Click It or Ticket*
 - August 16 – September 3, 2018 *Drive Sober or Get Pulled Over*
 - December 18 – January 3, 2019 *Drive Sober or Get Pulled Over*





Florida Department of
TRANSPORTATION

Florida Law Enforcement Liaison (LEL) Program



Florida Law Enforcement Liaison (LEL) Program

- Based on national model
- Almost every state plus Tribal partners
- National LEL Program started in 1997
- Florida's LEL Program started in 2000
- 237 LELs Nationwide





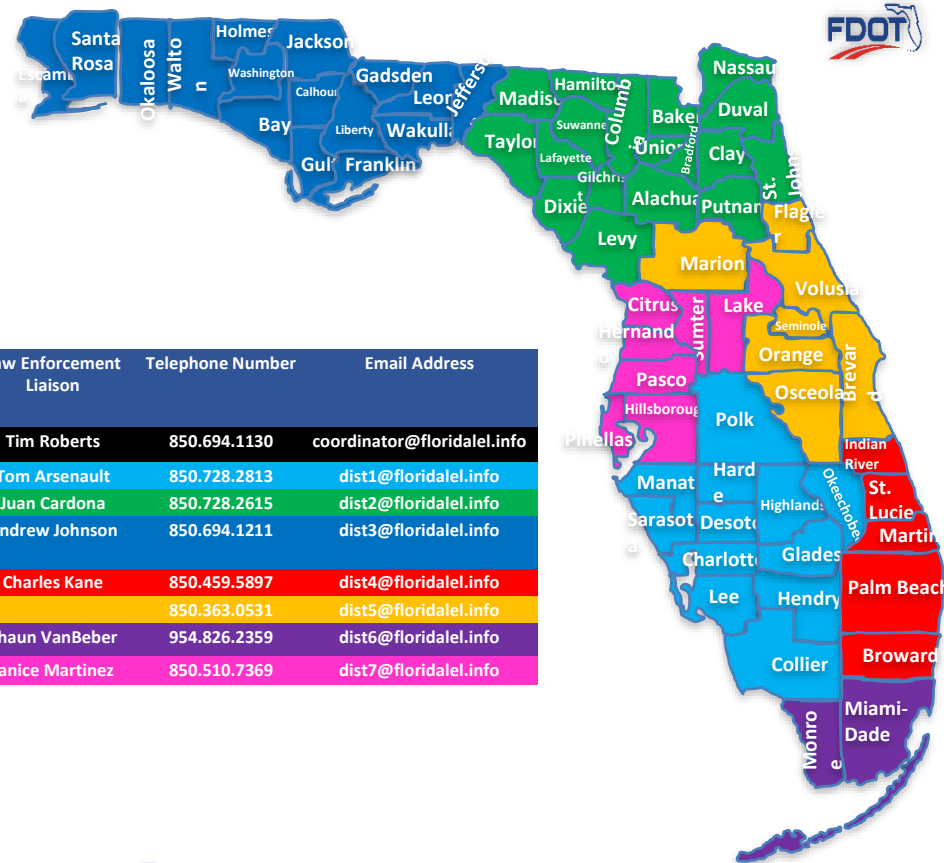
Florida Department of TRANSPORTATION





Florida Department of
TRANSPORTATION

Florida's LEL Team



Andrew



Juan



Tim

Area of Responsibility	Law Enforcement Liaison	Telephone Number	Email Address
Coordinator	Tim Roberts	850.694.1130	coordinator@floridalel.info
District 1	Tom Arsenault	850.728.2813	dist1@floridalel.info
District 2	Juan Cardona	850.728.2615	dist2@floridalel.info
District 3	Andrew Johnson	850.694.1211	dist3@floridalel.info
District 4	Charles Kane	850.459.5897	dist4@floridalel.info
District 5		850.363.0531	dist5@floridalel.info
District 6	Shaun VanBeber	954.826.2359	dist6@floridalel.info
District 7	Janice Martinez	850.510.7369	dist7@floridalel.info



Janice



Charles



Shaun



Tom

One Team. One Goal. Save Lives.



LEL Programs Primary Duties

- Encourage and Support Law Enforcement Participation in:
 - 3 NHTSA National Waves
 - Florida Law Enforcement Liaison Traffic Safety Challenge (240)
 - Other NHTSA and Florida Traffic Safety Campaigns
 - Hands Across the Border
 - I-95 Initiative
 - Southern Shield
 - Arrive Alive
- Participate in Traffic Safety Coalitions (24)
- Participate in District Community Traffic Safety Teams (151)
- Assist the FDOT Safety Office with helping Law Enforcement Agencies apply for subgrants
- Assist with any needed coordination of Law Enforcement Agencies



Florida Department of TRANSPORTATION





Florida Department of TRANSPORTATION



- Home
- LEL Districts
- Florida Law Enforcement Traffic Safety Challenge
- 2018 National Drive Sober or Get Pulled Over /Labor Day Campaign Report
- FDOT Grants
- LEL BOLO Newsletter
- NHTSA Calendar
- Presentations
- Resource Links
- Campaign Media
- Training Opportunities
- Training Videos
- Contact Us



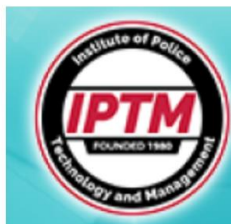
WELCOME TO THE FLORIDA LEL PROGRAM RESOURCE SITE

One Team. One Goal. Save Lives.



The Florida Law Enforcement Liaison (LEL) Program is a grant funded program sponsored by the Florida Department of Transportation (FDOT) and the National Highway Traffic Safety Administration (NHTSA). The goal of the LEL Program is to partner with law enforcement agencies to promote and increase participation in the NHTSA national enforcement waves and the annual Florida Law Enforcement Liaison Traffic Safety Challenge to increase awareness and participation in traffic safety-related efforts.

IPTM-Institute of Police Technology and Management



Traffic & DUI Enforcement

[Click here for listing of Traffic Safety Courses](#)

Traffic Safety Training



IPTM Traffic Safety Grant Funded Courses

[IPTM_Grant_Schedule-April2018.pdf](#)

Adobe Acrobat document [585.7 KB]



DWI SFST Refresher

[SFST_Refresher-2018.pdf](#)

Adobe Acrobat document [203.7 KB]



Advanced Roadside Impaired Driving Enforcement

[ARIDE-2018.pdf](#)

Adobe Acrobat document [119.1 KB]



Marijuana Impaired Driving Detection for Law Enforcement (MIDDLE)

[MIDDLE-2018.pdf](#)

Adobe Acrobat document [456.4 KB]



DUI Training

[IPTM-FREE-DUI-Training-2018.pdf](#)



Florida Department of TRANSPORTATION

LEL BOLO



Florida Law Enforcement Liaison News

2nd Qtr. 2018

2017 HOLIDAY SEASON IMPAIRED DRIVING CAMPAIGN DRIVE SO- BER OR GET PULLED OVER

In This Issue

- Articles from the LEL'S
- Calendar of upcoming events
- YTD Fatality Report
- FDOT Grant Funded Training
- Solve This?

The 2017 Holiday Season Impaired Driving Campaign enforcement ran from December 13, through December 31, 2017. The holidays are known for being merry and bright, but they're also known for being the deadliest season when it comes to drunk driving. Every holiday season, lives are lost due to drunk drivers.

Agencies were encouraged to focus their efforts on drunk and drugged driving enforcement and awareness during this campaign period.

Agencies Reporting	2017
Total Hours worked DUI Enforcement	97,041
Checkpoint Operations - Conducted	17
Checkpoint Operations - Attended	29
Provide the number of DUI arrests - alcohol only	1,361
Provide the number of DUI arrests - drugs only	155
Provide the number of DUI arrests - alcohol & drugs	817
Provide the number of safety belt citations	2,276
Provide the number of child safety citations	279
Provide the number of felony arrests	5,460
Provide the number of recovered stolen vehicles	584
Provide the number of fugitives apprehended	2,886
Provide the number of suspended licenses	6,771
Provide the number of uninsured motorists	5,430
Provide the number of speeding citations	19,952
Provide the number of reckless driving	2,515
Other	33,775
Provide the number of motorcyclist through checkpoints	17
Provide the number of motorcyclist DUI arrests	14
Number of press conferences held by your agency or Troop in promotion of this enforcement period.	65
Number of TV news stories aired locally	83
Number of radio news stories aired locally	163
Number of print articles run locally	110
Online - Number of online posts via articles, social media, facebook, twitter, etc.	271,982



www.floridalel.info





Florida Department of TRANSPORTATION



Home

LEL Districts

Florida Law Enforcement
Traffic Safety Challenge

Border to Border Report

Click It or Ticket
National Enforcement
Campaign Report

FDOT Grants

LEL BOLO Newsletter

NHTSA Calendar

Presentations

Resource Links

Campaign Media

Training Opportunities

Training Videos

Contact Us



Podcasts

Podcast: Larry Coggins on Social Media

Power Point Presentations

2017 Presentations



NHTSA Region IV Presentation from the Florida Law Enforcement Liaison Challenge and Training Event
[FL Challenge Presentation 2017.pptx](#)
Microsoft Power Point presentation [2.1 MB]

2017 Local Area Network Traffic Safety Presentations



Holiday Period Local Area Network Traffic Safety Meeting
[November-December Statewide LAN Presenta\[...\]](#)
Adobe Acrobat document [7.1 MB]



August Statewide Local Area Network Traffic Safety Presentation
[August Statewide LAN Presentation.pdf](#)
Adobe Acrobat document [3.9 MB]



February Statewide Local Area Network Traffic Safety Presentation
[February Statewide LAN Presentation.pdf](#)
Adobe Acrobat document [3.9 MB]

2016 LAN Presentations



February Statewide Local Area Network Traffic Safety Presentation
[February State Wide LAN Presentation.pdf](#)
Adobe Acrobat document [5.8 MB]



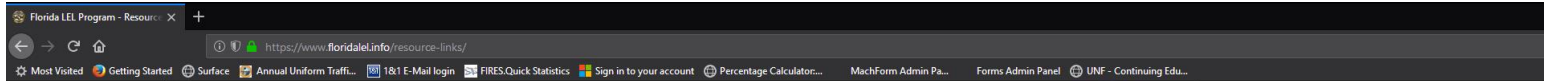
May State Wide Local Area Network Traffic Safety Presentation
[May State Wide LAN Presentation.pdf](#)
Adobe Acrobat document [15.0 MB]



August Statewide Traffic Safety Presentation



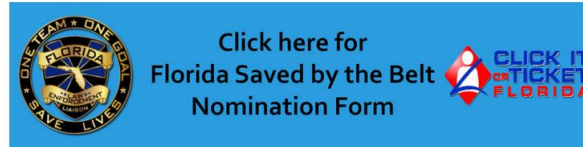
Florida Department of TRANSPORTATION



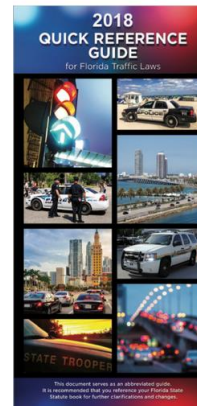
- Home
- LEL Districts
- Florida Law Enforcement Traffic Safety Challenge
- 2018 National Drive Sober or Get Pulled Over / Labor Day Campaign Report
- FDOT Grants
- LEL BOLO Newsletter
- NHTSA Calendar
- Presentations
- Resource Links**
- Campaign Media
- Training Opportunities
- Training Videos
- Contact Us




Resource Links



2018 Quick Reference Guide



 **2018 Quick Reference Guide for Florida Traffic Laws**
[2018 FL LEL Quick Reference Guide - 07 \[..\]](#)
Adobe Acrobat document [2.4 MB]



Florida Department of TRANSPORTATION



Home

LEL Districts

Florida Law Enforcement
Traffic Safety Challenge

Border to Border Report

Click It or Ticket
National Enforcement
Campaign Report

FDOT Grants

LEL BOLO Newsletter

NHTSA Calendar

Presentations

Resource Links

Campaign Media

Training Opportunities

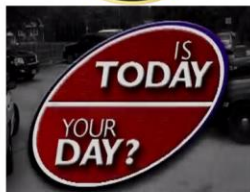
Training Videos

Contact Us



The following images
shown are real.
you have seen these before
may happen to you if you drink
and drive.

DUI Awareness



Is today your day?



Kevin Will Story



LEL Program Overview



Police Pursuit Training



Roll Call: Bike Enforcement



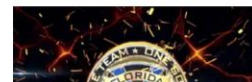
Pull 'Em Over



Sovereign Citizen Movement



Roll Call: HVE Training Video



Reporting Agencies

2017 Labor Day National Impaired Driving Enforcement Campaign 181

2017 Holiday Season Impaired Driving Campaign	221
---	-----

2016 Labor Day DUI Enforcement Report	250
---------------------------------------	-----

2016 Holiday Season DUI Report	190
--------------------------------	-----

2015 Holiday Impaired Driving Crackdown	251
---	-----

2014 DUI - St. Patrick's Impaired Driving Crackdown	123
---	-----

2013 DUI - St. Patrick's Day Wave Report	114
--	-----

2013 DUI - Mobilization Enforcement Report	143
--	-----

2013 DUI - Holiday Drive Sober or Get Pulled Over Report	165
--	-----

2013 DUI - Halloween Mobilization Enforcement Report	130
--	-----





Florida Department of TRANSPORTATION

STATE OF FLORIDA IMPLIED CONSENT WARNINGS

"NOT APPLICABLE WITH VOLUNTARY CONSENT"

BREATH TESTING

I am now requesting that you submit to a lawful test of your **BREATH** for the purpose of determining its alcohol content.

Will you take the test?

NOTE: READ ONLY IF THE ANSWER TO THE ABOVE IS "NO"

If you refuse to take the test I have requested of you, your driving privilege will be suspended for a period of one (1) year for a **FIRST REFUSAL**, or eighteen (18) months if your driving privilege has been **PREVIOUSLY SUSPENDED** for refusing to submit to a lawful test of your breath, urine, or blood. Additionally, if you refuse to take the test I have requested of you, and if your driving privilege has been previously suspended for a refusal to submit to a lawful test of your breath, urine, or blood, you will be committing a misdemeanor, in addition to any other penalties which can be imposed by law. Refusal to submit to the test I have requested is admissible into evidence in any criminal proceeding.

Do you still refuse to submit to this test?

NOTE: If the subject possesses a CDL endorsement, read the following, regardless of whether the subject is operating a commercial vehicle

In addition, if you are a CDL holder, or were driving a CMV, your refusal to submit to testing will result in the loss of your commercial driving privileges for one year from today. If this is your second refusal, you will be permanently disqualified from operating a commercial motor vehicle.

Do you still refuse to submit to this test?



Funded by
FDOT



Revised: 02/02/18

STATE OF FLORIDA IMPLIED CONSENT WARNINGS

"NOT APPLICABLE WITH VOLUNTARY CONSENT"

URINE TESTING

I am now requesting that you submit to a lawful test of your **URINE** for the purpose of determining the presence of chemical or controlled substances.

Will you take the test?

NOTE: READ ONLY IF THE ANSWER TO THE ABOVE IS "NO"

If you refuse to take the test I have requested of you, your driving privilege will be suspended for a period of one (1) year for a **FIRST REFUSAL**, or eighteen (18) months if your driving privilege has been **PREVIOUSLY SUSPENDED** for refusing to submit to a lawful test of your breath, urine, or blood. Additionally, if you refuse to take the test I have requested of you, and if your driving privilege has been previously suspended for a refusal to submit to a lawful test of your breath, urine, or blood, you will be committing a misdemeanor, in addition to any other penalties which can be imposed by law. Refusal to submit to the test I have requested is admissible into evidence in any criminal proceeding.

Do you still refuse to submit to this test?

NOTE: If the subject possesses a CDL endorsement, read the following, regardless of whether the subject is operating a commercial vehicle

In addition, if you are a CDL holder, or were driving a CMV, your refusal to submit to testing will result in the loss of your commercial driving privileges for one year from today. If this is your second refusal, you will be permanently disqualified from operating a commercial motor vehicle.

Do you still refuse to submit to this test?



Funded by
FDOT



Revised: 02/02/18

STATE OF FLORIDA IMPLIED CONSENT WARNINGS

"NOT APPLICABLE WITH VOLUNTARY CONSENT"

BLOOD TESTING

I am now requesting that you submit to a lawful test of your **BLOOD** for the purpose of determining its alcohol content and/or the presence of chemical or controlled substances.

Will you take the test?

NOTE: READ ONLY IF THE ANSWER TO THE ABOVE IS "NO"

If you refuse to take the test I have requested of you, your driving privilege will be suspended for a period of one (1) year for a **FIRST REFUSAL**, or eighteen (18) months if your driving privilege has been **PREVIOUSLY SUSPENDED** for refusing to submit to a lawful test of your breath, urine, or blood. Refusal to submit to the test I have requested is admissible into evidence in any criminal proceeding.

Do you still refuse to submit to this test?

NOTE: If the subject possesses a CDL endorsement, read the following, regardless of whether the subject is operating a commercial vehicle

In addition, if you are a CDL holder, or were driving a CMV, your refusal to submit to testing will result in the loss of your commercial driving privileges for one year from today. If this is your second refusal, you will be permanently disqualified from operating a commercial motor vehicle.

Do you still refuse to submit to this test?



Funded by
FDOT





Florida Department of TRANSPORTATION



SFST SCORING SHEET (Check All that Apply)



Horizontal Gaze Nystagmus (HGN)

Are you wearing glasses or contacts? ☐ Yes ☐ No
I'm going to check your eyes.
Stand with your feet together, with your hands by your sides.
Look at the stimulus and follow the stimulus with your eyes only. Do not move your head. Keep looking at the stimulus until told the test is over.
Hold stimulus approx. 12-15" in front of face

CHECK FOR

	Yes	No
Equal Pupil Size	<input type="checkbox"/>	<input type="checkbox"/>
Resting Nystagmus	<input type="checkbox"/>	<input type="checkbox"/>
Equal Tracking	<input type="checkbox"/>	<input type="checkbox"/>

CLUES

	Left	Right
Lack of Smooth Pursuit 2 seconds out; 2 seconds back	<input type="checkbox"/>	<input type="checkbox"/>
Distinct and Sustained Nystagmus @ Maximum Deviation Hold minimum of 4 seconds	<input type="checkbox"/>	<input type="checkbox"/>
Onset of Nystagmus Prior to 45 degrees	<input type="checkbox"/>	<input type="checkbox"/>

Vertical Nystagmus

	Yes	No
Vertical Nystagmus Hold for approx. 4 seconds	<input type="checkbox"/>	<input type="checkbox"/>

Notes



Last Updated: 06/06/19

Walk and Turn

INSTRUCTIONS STAGE

Place your left foot on a line (real or imaginary), and put your right heel against the toe of your left foot.
Place your arms down at your sides.
Maintain this position until I have completed the instructions. Do not start to walk until told to do so.
Do you understand? ☐ Yes ☐ No

WALKING STAGE

When I tell you to start, take nine heel-to-toe steps on the line, turn, and take nine heel-to-toe steps down the line. (demonstrate min 3 steps)
When you turn, keep the front (lead) foot on the line, and turn by taking a series of small steps with the other foot. (demonstrate)
While you are walking, keep your arms at your sides, watch your feet at all times, and count your steps out loud.
Once you start walking, don't stop until you have completed the test.
Do you understand the instructions? ☐ Yes ☐ No



CLUES

- ☐ Cannot keep balance while listening to instructions
- ☐ Starts too soon
- ☐ Stops while walking
- ☐ Does not touch heel to toe
- ☐ Steps off the line
- ☐ Uses arms for balance
- ☐ Improper turn
- ☐ Incorrect number of steps

One Leg Stand

INSTRUCTIONS STAGE

Stand with your feet together and your arms down at the sides. (demonstrate)
Do not start to perform the test until I tell you to do so. Do you understand the instructions so far?
☐ Yes ☐ No



	Left	Right
Sways while balancing	<input type="checkbox"/>	<input type="checkbox"/>
Uses arms to balance	<input type="checkbox"/>	<input type="checkbox"/>
Hopping	<input type="checkbox"/>	<input type="checkbox"/>
Put foot down	<input type="checkbox"/>	<input type="checkbox"/>

Defendant's Rights

- You have the right to remain silent.
- Anything you say can and will be used against you in court.
- You have the right to have an attorney with you prior to, during, or after any questioning.
- If you cannot afford an attorney and desire one, the court will appoint one for you.
- You may stop the questioning at any time by refusing to answer further or by requesting to consult with your attorney.

WAIVER

Do you understand each of these rights I have explained to you?
Having these rights in mind, do you wish to answer questions or make a statement at this time?



Implied Consent Card Read

- ☐ Blood
- ☐ Breath
- ☐ Urine

Balancing and Counting Stage

When I tell you to start, raise either leg with the foot approximately six inches off the ground, keeping your foot parallel to the ground. (demonstrate)

Keep both legs straight and your arms at your sides.
While holding that position, count out loud in the following manner: "one thousand one, one thousand two, one thousand three," and so on until told to stop.
Keep your arms at your sides at all times and keep watching the raised foot.

Do you understand? ☐ Yes ☐ No
☐ Cannot perform test (test stopped for suspect's safety)

ARIDE TESTS

Lack of Convergence



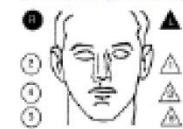
Modified Romberg Balance



Time Estimation
estimated as 30 seconds

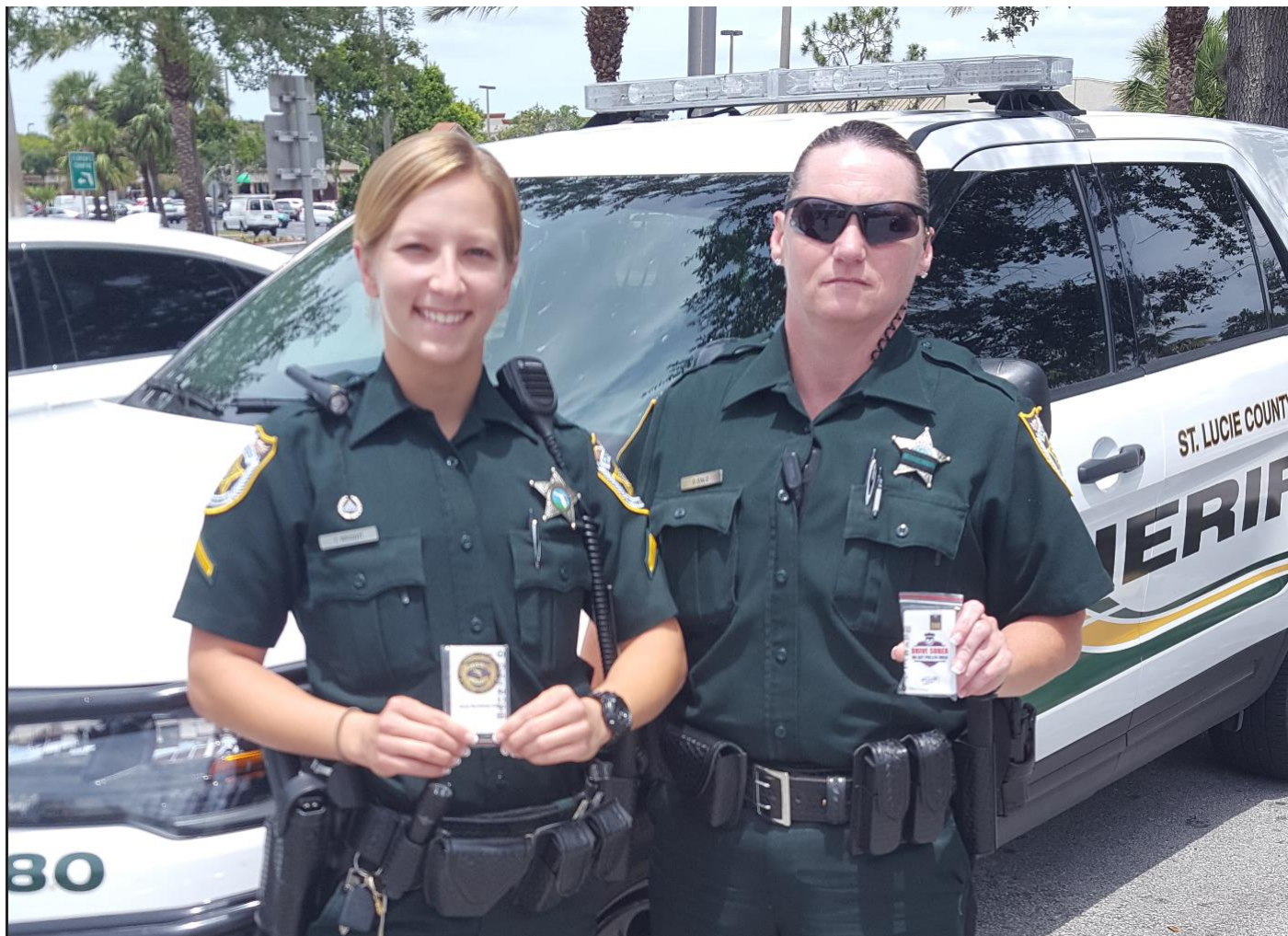
Finger To Nose

(Draw lines to spots touched)





Florida Department of
TRANSPORTATION





Florida Department of
TRANSPORTATION

Florida Law Enforcement Liaison (LEL) Program





Florida Department of
TRANSPORTATION

Questions

